

In-Class and Homework: Still Life in B/W and in Color

Assignment Due Date:

Begin in class, finish for homework

Due: Week 8, Tuesday, 02-28, 8 am

Media:

2 sheets of 18" x 24" Heavyweight Sketch Paper, Charcoal Pencil, Compressed Charcoal, vine charcoal for beginning the sketch, Gum Eraser, 4 nice pastels (Red, Yellow, Blue, and White) or box of NuPastels

Assignment:

A still life of simple shapes will be set up and strongly lit.

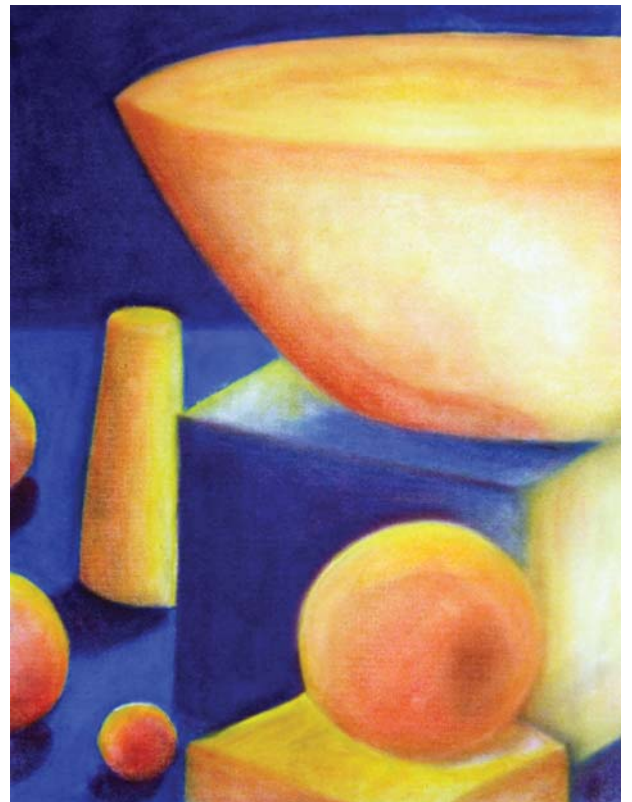
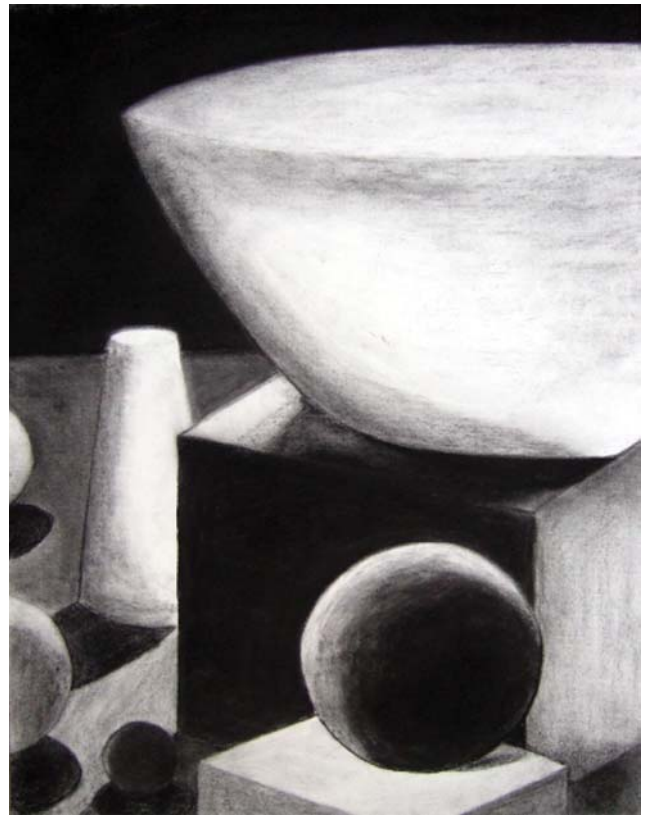
Step 1: First you will thumbnail, creating a line drawing at 8 1/2" x 11". This drawing will be the basis for both large drawings so be sure you like the composition (Starting over will not be an option once you have begun the large drawings). Think about the principles of design: positive and negative space, balance, repetition, rhythm. unity and variety.

Step 2: Blow up the thumbnail sketch (exactly) onto both sheets of nice paper. Very lightly sketch the still life, laying out the entire composition on both. Use light charcoal for one blow up and a light color (yellow or orange) for the other blow up. At this point you have 3 line drawings of the same composition.

HOW TO BLOW UP: Fold the thumbnail drawing into 4 or 8 equal parts. Make light marks on your large page that correspond to these marks. Copy the drawing section by section. Once you have the black line drawing done, trace the color duplicate by laying the blank paper on top of the first drawing and taping them up on a window like a light box.

Step 3: Turn your attention to the large line drawing in charcoal. Use Compressed charcoal to complete the value you see in the still life. Make the background the darkest value in the composition but be sure that you extend that black to the darkest shadowed areas within the composition so that there will be balance. Don't forget to draw the shadows the objects cast on the ground plane and the reflected light the objects cast on each other.

Step 4: Turn your attention to the light colored line drawing. Using your color theory hand out to guide your color choices, and your 8 1/2" x 11" thumbnail drawing to make color notes on, assign colors to the objects, ground plane and background. Try to use dark colors to create shadows rather than relying on black.



Completion of this project is worth 10 points of your final grade as it is both an in class and a homework assignment.