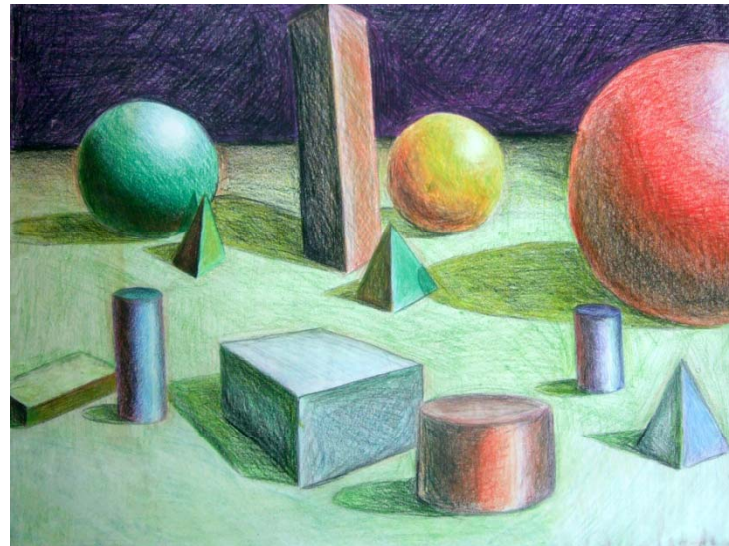
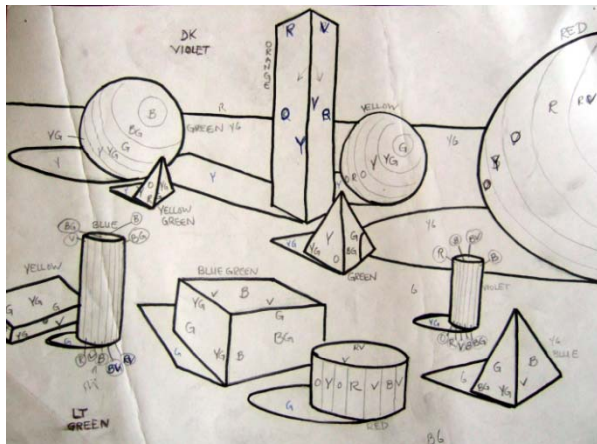
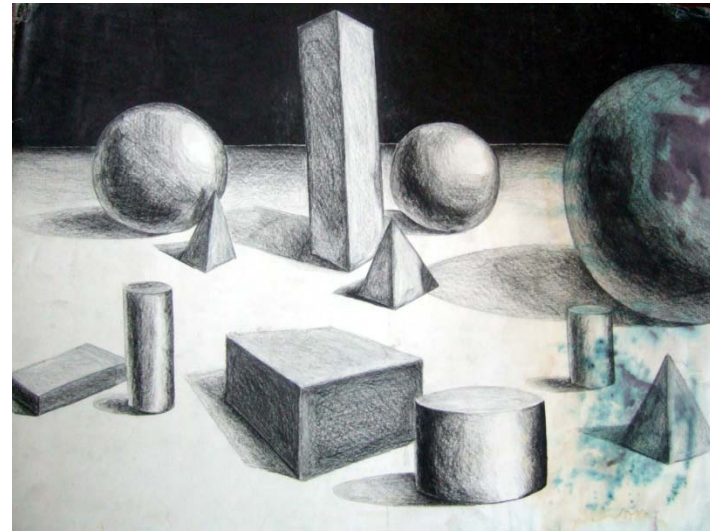


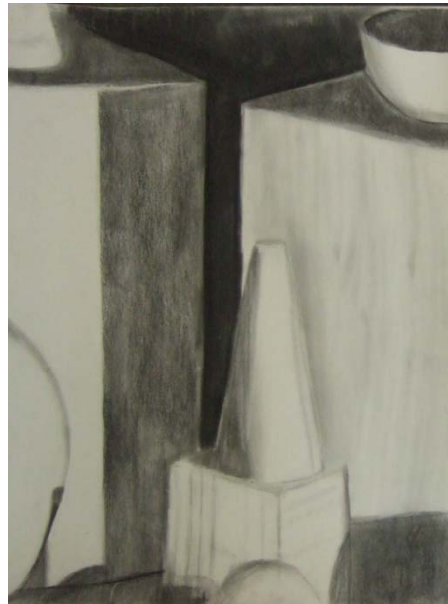
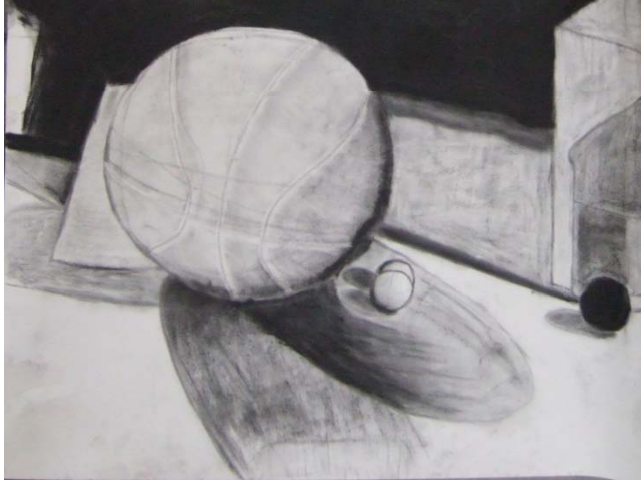
COLOR

B/W into Color Assignment

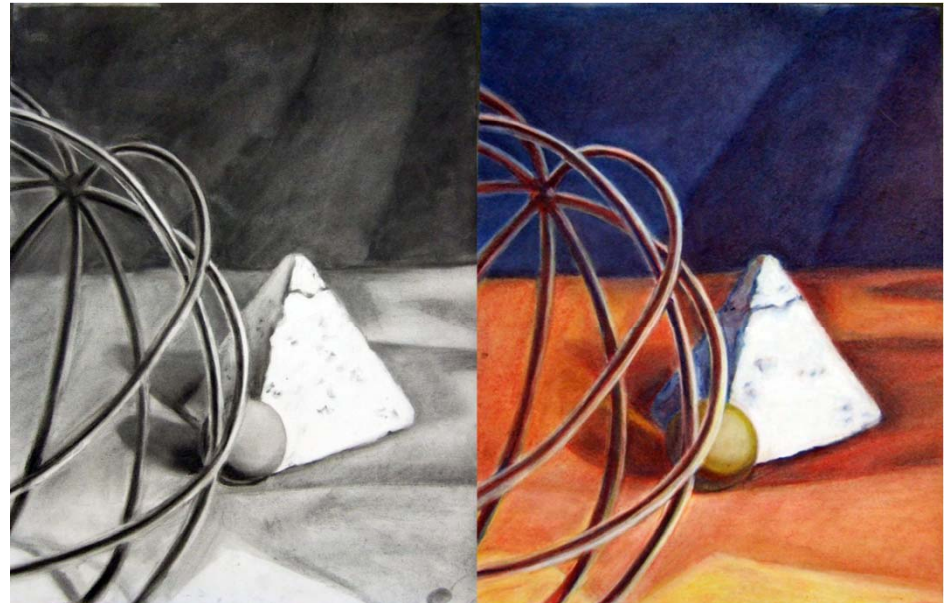
This 3 drawing assignment
Will be a turning point in
the class as you learn to use
Line drawing as a plan, then a
Full range of black and white
Values, and then color.
(These are my drawings from
When I was in school.)



Student Examples of B/W into Color Assignment

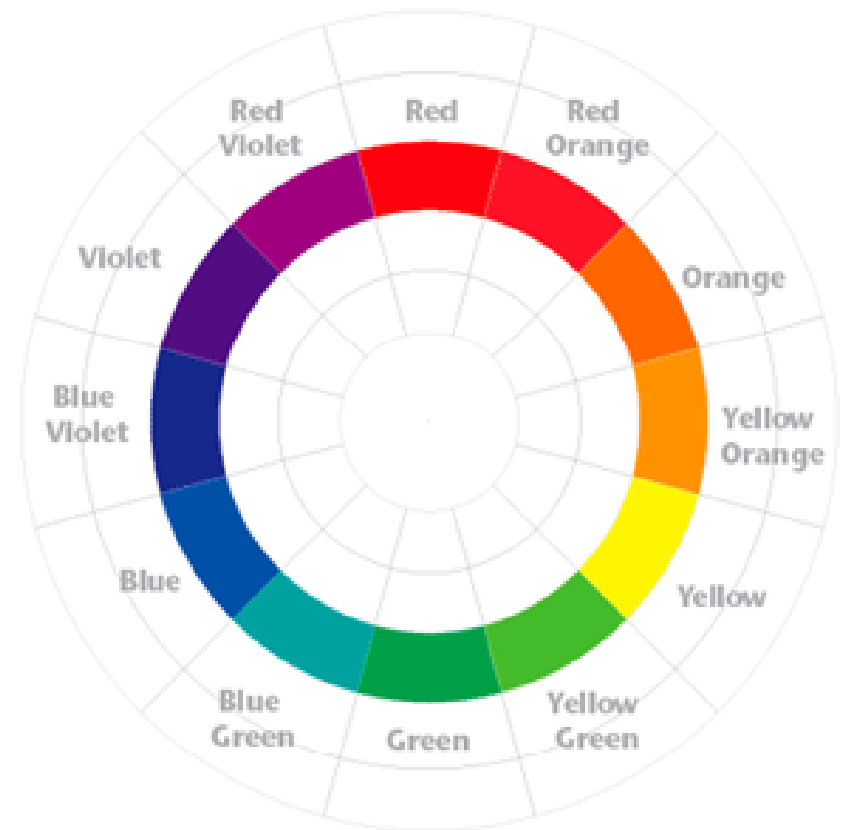


Student Examples of BW to Color



Color

- The **primary colors** are [red](#), [yellow](#) and [blue](#), and are used to create secondary and intermediate colors.
- Secondary colors are made by mixing two primary colors together. The **secondary colors** are:
 - [Orange](#) - made by mixing [red](#) and [yellow](#)
 - [Green](#) - made by mixing [blue](#) and [yellow](#)
 - [Violet](#) - made by mixing [blue](#) and [red](#)
- **Tertiary colors** are made by mixing a secondary and a primary color together. Some examples are [blue-green](#) and [red-violet](#).
- Warm, Cool and Neutral colors
- **Warm colors** are the different shades of [red](#), [yellow](#) and [orange](#), and are called so because they convey the feeling of warmth.
- **Cool colors** are shades of [blue](#), [green](#) and [violet](#), conveying a feeling of coolness and quiet.
- **Neutral colors** are also called the earth tones, and are the colors of [black](#), [white](#) and [gray](#). At times [brown](#), [beige](#) and [tan](#) are also considered as neutral colors. These colors can be made by either mixing the complimentary colors, all of the primaries, or mixing black and white.
- **Complementary colors** are colors that are on the opposite sides on the [color wheel](#). They contrast each other and make each other appear brighter, adding energy to an artwork. The complementary colors are:
 - [Red](#) and [Green](#)
 - [Yellow](#) and [Violet](#)
 - [Blue](#) and [Orange](#)
- **Analogous colors** are 2 or 3 colors next to each other on the wheel
- When a variety of values are created with one color + black and white, it is called a **monochromatic scheme**.



Color Schemes

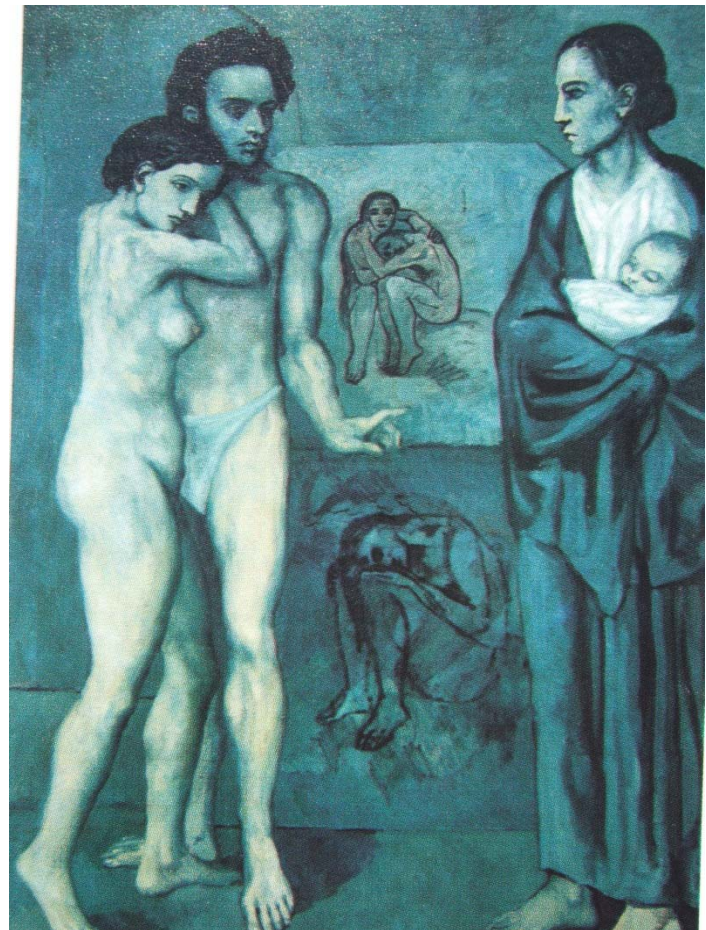
- Complementary

Artist: Henri de Toulouse-Lautrec



- Monochromatic

Artist: Pablo Picasso



Color Schemes

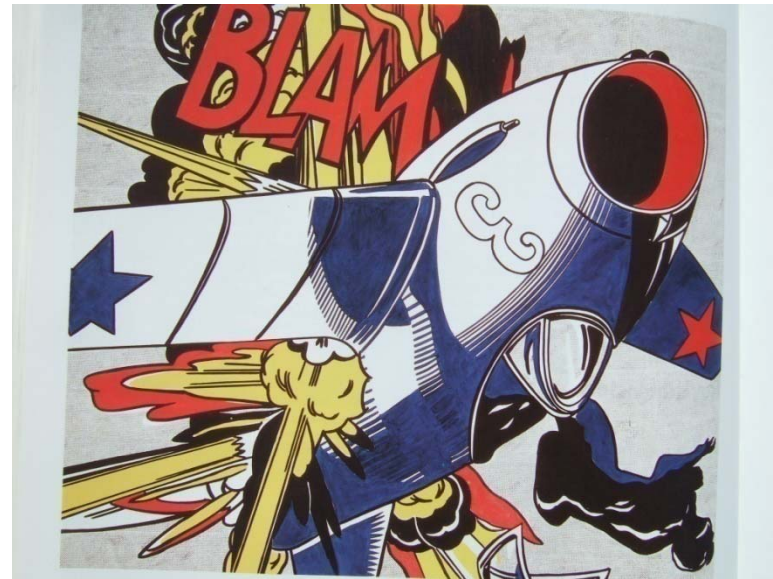
- Analogous

Artist: Paul Klee



- Triadic (primaries)

Artist: Roy Lichtenstein



Blue Shadows

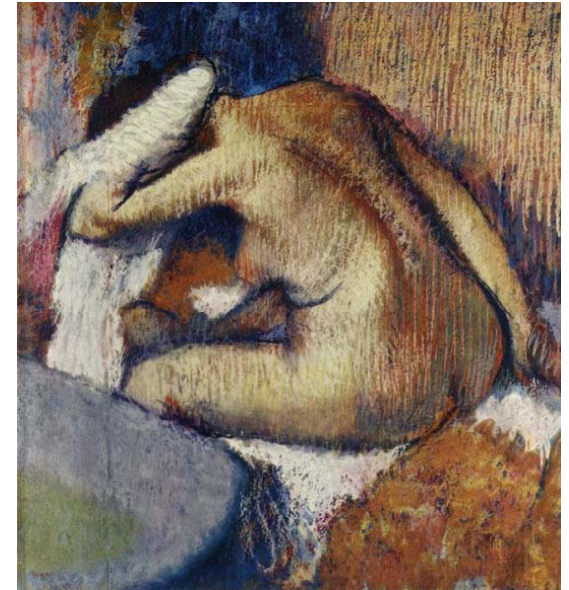
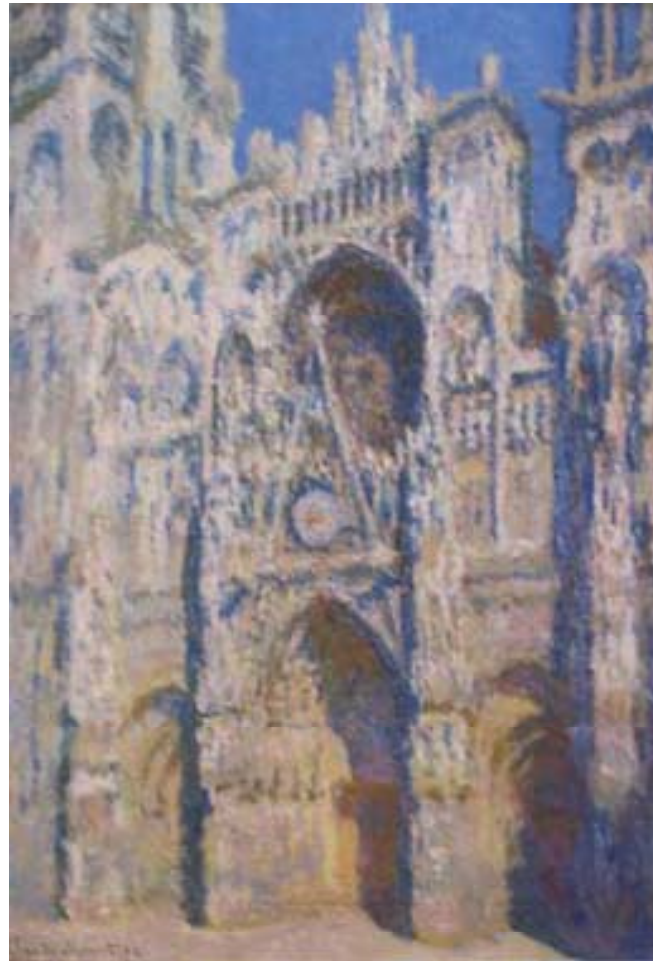
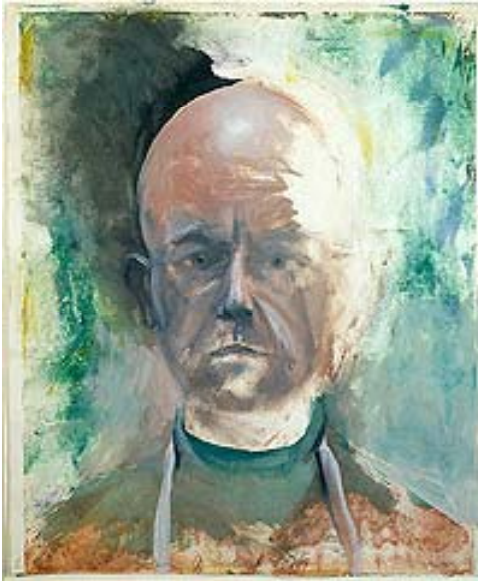


Photo



Van Gogh

More cool shadows



Clockwise from bottom left: Edward Hopper, Jim Dine, Claude Monet, Edgar Degas, Wayne Thiebaud

Candy in Color Student Examples

